





"Welcome to BLC International in the heart of our city. BLC's lively, modern, inclusive and vibrant approach to language learning gives you the best platform to build your confidence and ability in English. I look forward to meeting you here in Brighton."

Gary Charles Farmer,
Centre Director BLC International



Brighton

A truly exciting city

Brighton is one of the most cosmopolitan cities in the UK and located just 50 minutes from central London by train. It has much of what London has to offer; a notable difference being that Brighton is a seaside resort city.

Brighton is the UK’s most popular seaside destination and a truly exciting city with its own identity. Brighton is a unique, upmarket and welcoming place mixing historic buildings, diverse nightlife, trendy boutiques, a rich theatrical and music scene, fabulous clubs and bars, family entertainment, eclectic shopping, 2 universities and a beach front which is one of the most visited in the UK. Not only that, but with the beautiful South Downs National Park close by, offering rolling hills and stunning cliff top coastlines, Brighton is a city with plenty to offer.

Brighton is famous for the Royal Pavilion; the home of King George IV (The Prince Regent) which he often visited as a holiday destination leading a luxurious lifestyle. Since the eighteenth century, Brighton has had the reputation for being a relaxed and vibrant city. Londoners have been travelling to Brighton and the beach ever since the railway arrived in 1841 to bathe in the sea and they still do today to get away from the pressures of city life. Brighton Palace Pier and the Royal Pavilion are the main sights, but you will also find hundreds of pubs and clubs attracting an energetic crowd. The city is now also home to the British Airways i360, the world’s thinnest moving observation tower (162m) with views along the coast, across the South Downs and across the English Channel.

Brighton comes alive when the sun is shining; people fill the streets and head down to the beach at every opportunity. Brighton is one of the lead cities in the UK to host a Pride festival, a celebration to promote

equality and diversity (LGBTQ+). The major event is an annual summer festival held in the first week of August which consists of a parade through the city centre, an event in Preston Park and the Kemp Town Village Party with major artists performing.

For a quieter place in the sun just head west and pass the seafront bars and the old West Pier (Brighton’s ghostly pier that caught on fire in 2003). However, Brighton is an all–season city and even though it can be crowded on a hot summer’s day from September the crowds are less but the city still retains its charm.

If the city–life is too much for you, you can always have a break in the fabulous South Downs National Park. Just take a bus or train and in 20 minutes you are walking among green hills, strolling along cobbled streets and enjoying some of the most beautiful coastline views England has to offer.

Brighton & Hove Albion FC were promoted to The Premier League in 2017. Also known as “The Seagulls” their Premier League status means that in the 2023/24 season Brighton are playing against some of the biggest football teams in England at The Amex Stadium in Brighton.

Brighton and Hove Albion finished in 6th position at the end of the 2022/2023 Premier League season meaning that for the first time in the club’s history we qualify to play in the in the UEFA Europa League 2023/2024.

Whatever it is you are looking for to complement your studies and free time, Brighton has a lot to offer.



Sussex country pub



Burning of the Clocks



Brighton Arts Festival



Lewes Bonfire Night



Brighton Pride Festival

2024 events in Brighton

March	Sussex Beer & Cider Festival, Vegetarian Festival
April	Brighton Marathon, Brighton Food and Drink Festival
May	Brighton Arts Festival, The Great Escape Music Festival
June	World Naked Bike Ride, London to Brighton Bike Ride
August	Brighton Food and Drink Festival, Pride Festival
September	Chilli Festival, Colour Run
October	Brighton Comedy Festival
November	Lewes Bonfire Night, Royal Pavilion Ice Rink
December	Christmas Markets, Burning of the Clocks

Student Services

Helping you day by day

Homestay Accommodation

Live in an English-speaking household and learn as you live together, a unique opportunity to improve fluency and experience our culture first hand. A variety of room options are available for you to choose between and you can also eat together with your hosts every morning and evening. BLC International homestays are 25–50 minutes away from our city centre school by public transport.

Each homestay provides a different experience of British life where you are welcomed as part of the family. All our homestays are carefully checked by our Accommodation Officers who are available at all times if you need any help while you are here.

Special dietary needs can be catered for (vegan, celiac, lactose free etc.) for a supplement.

BLC Homestay

Single/twin rooms
Carefully selected welcoming hosts
Half board or breakfast only
Excellent value for money
Practise your English at home

BLC Premium Homestay

Private bathroom
Exclusive homestay providers
Ideal for professionals

Private Accommodation

BLC International can advise on finding private accommodation with a number of recommended agencies, hotels or hostels in the city. Please remember that if you choose to arrange private accommodation you will not have the benefits of everyday communication and language use your homestay provides.

Public Holidays

BLC International is closed on all UK Public Holidays except Easter (29.03.24 / 01.04.24). In such cases new students will start on the Tuesday if the Public Holiday is a Monday.

School Closure Dates

- » 25.12.23 - 01.01.24
- » 06.05.24
- » 27.05.24
- » 26.08.24
- » 23.12.24 – 03.01.25

Student Welfare

At BLC International we provide a complete welfare package so you have everything you require for a successful and memorable period of study. Our Welfare Officer ensures that you have a safe and enjoyable experience in Brighton and will provide you with all the information you need to maximise your stay here with us. On day 1 you will receive:

A warm welcome, induction and orientation
Your initial free text book
An introduction to our team
Information on Brighton, the college, areas of interest and our facilities
Free Super Fast Wi-Fi (70 Mbps) access
Out of hours hot line phone number
An exciting and active social programme so you can make new friends
BLC International student ID card

Airport Transfer Service

BLC International can arrange private taxi transfers to take you directly to your accommodation on arrival and back to the airport on your departure.

Social Programme

BLC International looks after your language training and it is also our mission for you to have a great time outside of class relaxing, using the language you have learned and communicating with other students and local people in your free time. We organise many events and work with many local events organisers for special prices and are always here to help you book trips around the UK or provide you with advice.

Example Social Activities (seasonal)

Cinema Evenings
Paris Weekend
West End Musicals
Concerts
Premier League Football
Beach Volleyball
Pottery Classes
International Student Nights
Bowling
Pub Quiz
Basketball
London Excursions
Lazer Zone
Beach Barbecues
Nature walks
Cream Teas



Key Information

Location, facts and figures



Classes

Maximum Class Sizes:		Minimum Ages:		Lesson Length:	
General English	16	General English	16	1 lesson	45 minutes
IELTS Academic Test Preparation	16	IELTS Academic Test Preparation	16	20 lessons	15 hours
Cambridge B2 First (FCE)	10	Cambridge B2 First (FCE)	16	26 lessons	19.5 hours
Cambridge C1 Advanced (CAE)	10	Cambridge C1 Advanced (CAE)	16	29 lessons	22.75 hours
Skills	16	Skills	16	32 lessons	24 hours
English & Culture (40+)	8	English & Culture (40+)	40		

Nationality Mix (adult tuition)

A mix of over 45 other nationalities	30%
Germany	18%
Italy	14%
Switzerland	10%
Saudi Arabia	7%
Spain	7%
Thailand	6%
South Korea	4%
Turkey	4%

*Data provided is for 2023

Age Mix

18 - 20	33%
21 - 30	28%
31 - 40	13%
41 - 50	12%
51 - 60	11%
61+	3%

Gender Mix

Female	58%
Male	42%



Facilities

Your school and environment

Background

BLC International was established in 1995 and relocated to new premises in 2015 with modern facilities and classrooms covering 6 colour coded floors and over 1000m². The school is situated in the city centre opposite the Royal Pavilion and only 2 minutes walk from the beach and Brighton Palace Pier & Sea Life Centre.

You are in the heart of the city each day of your studies, meaning you have all the benefits of Brighton's superb restaurants, beaches, night life, shops, entertainment and unique lifestyle in the UK's trendiest resort city. Brighton Language College International operates from 2 buildings, 7 and 12 Old Steine.

School Floor Guide - 7 Old Steine

- 6 4th Floor: one to one classrooms / large group classrooms / small group classrooms
- 5 3rd Floor: large group classrooms / small group classrooms
- 4 2nd Floor: large group classrooms / small group classrooms
- 3 1st Floor: Offices / teaching resource centre / large group classrooms
- 2 Ground Floor: Reception / large group classrooms / small group classrooms / patio
- 1 Underground: Student lounge

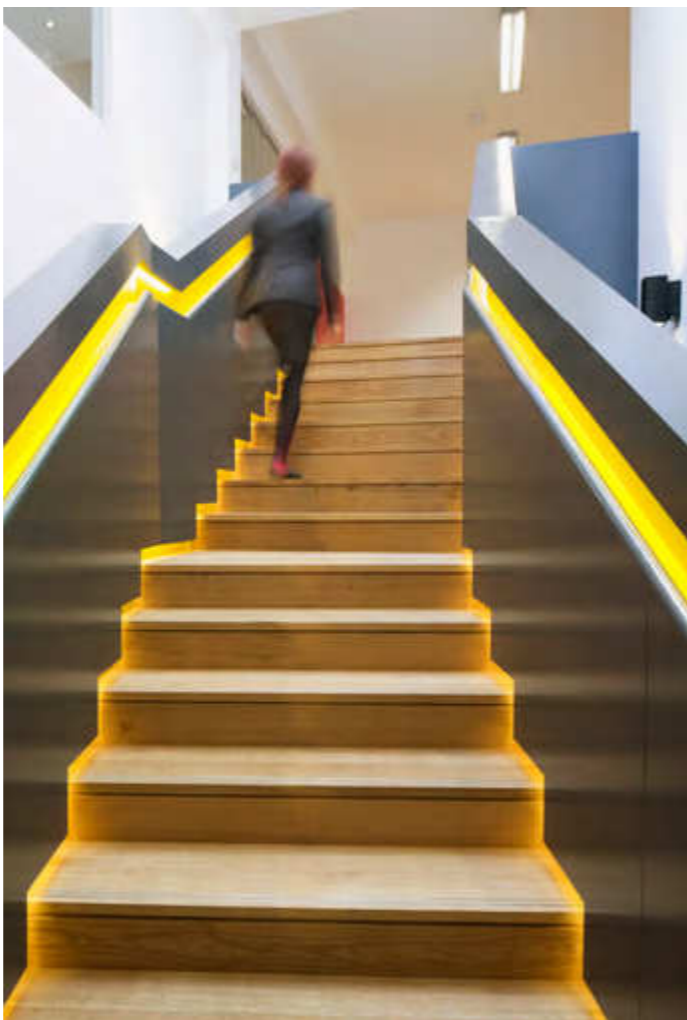
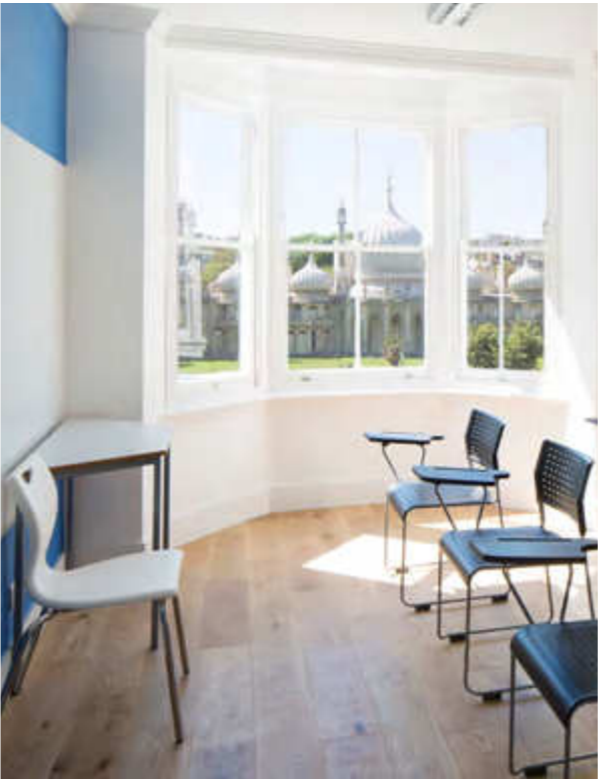
BLC International Video



Scan the QR code with your phone or click the link to our YouTube channel [here](#)

Features

- Free Super Fast Wi-Fi (70 Mbps)
- City centre school
- Reception / information desk
- Student lounge & patio
- Welfare & counselling service
- Airport Transfer service
- Accommodation service
- Royal Pavilion views
- 35 Classrooms



Your Progression

Understanding your level of English

Our Courses

Courses taught at Brighton Language College International improve your English ability. Our teachers will tailor the course for your level.

To help you assess your level, we have a free English level test on our website. We teach 5 levels of English (Elementary - Advanced) and 6 levels (Beginner - Advanced) during high season (June - August).

English Language Levels

All of our courses follow the Common European Framework Reference for Languages (CEFR).

Every course page lists the level the course is suitable for and many of our courses are available for all levels (you will be placed in a class with people of a similar level to you).

Pre-Arrival Test

All students on an adult course must take a pre-arrival test before arrival. Tests must be taken and completed one week prior to arrival.

If a pre-arrival test has not been completed prior to arrival, then your first day will consist of a test and your first day of class may commence on the next day.

CEFR	BLCI Level	Cambridge	IELTS	You can...	You can...	You can...
C2	Proficiency	C2 Proficiency	8.5 - 9.0	Understand with ease virtually everything heard or read	Summarise information from different sources, reconstructing arguments and accounts in a coherent presentation	Express yourself spontaneously, fluently and precisely even in the most complex situations
C1	Advanced	C1 Advanced	7.0 - 8.0	Understand a wide range of demanding, longer texts, and recognise implicit meaning	Express yourself fluently and spontaneously without much obvious searching for expressions	Use language flexibly and effectively for social, academic and professional purposes
B2	Upper Intermediate	B2 First	5.5 - 6.5	Understand the main ideas of complex text on both concrete and abstract topics.	Interact with a degree of fluency and that makes interaction with native speakers possible without strain for either party	Produce clear, detailed text on a wide range of subjects and be able to explain viewpoints on topical issues.
B1	Intermediate Pre-Intermediate	B1 Preliminary	4.0 - 5.0	Understand the main points of clear standard input on familiar matters regularly encountered in work, school, leisure, etc	Produce simple connected text on topics which are familiar or of personal interest	Describe experiences, events, hopes and ambitions. Briefly give reasons and explanations for opinions and plans
A2	Elementary	A2 Key	3.0 - 3.5	Communicate routine tasks requiring on familiar and routine matters	Understand basic sentences and expressions on personal and family information, shopping, local geography, employment	Describe in simple terms aspects of your background, environment & matters in areas of immediate need
A1	Beginner	-	2.0 - 2.5	Understand and use familiar expressions and very basic phrases	Interact in a simple way if the other person talks slowly and clearly and is prepared to help	Introduce yourself, ask and answer questions about where you live, people you know

QR Code and test link



Scan the QR code with your phone or click the link to the on-line test [here](#)



General English

General English courses run throughout the year. The course is designed to increase your English level through a syllabus which concentrates on listening, reading, speaking and writing. With the text book grammar and vocabulary is learned to consolidate your studies. Afternoon options cover further skills focussed training, business english lessons or private tuition. *Beginners are welcome June - August.

Start Dates	Course Levels	Maximum Class Size	Minimum Course Length	Minimum Age
Every Monday	*Beginner (A1) – Advanced (C1)	16 (10 average)	1 week	16 (23 average)

English 20

Lessons per week:	20	AM Schedule:	09:15 - 12:30
Hours per week:	15	AM Content:	General English
Course Book:	Included (1)	PM Schedule:	N/A
Course Code:	E20	PM Content:	N/A

English 20 + Skills 6

Lessons per week:	26	AM Schedule:	09:15 - 12:30
Hours per week:	19.5 (15 + 4.5)	AM Content:	General English
Course Book:	Included (1)	PM Schedule:	13:30 - 16:00 (Mon & Wed or Tue & Thu)
Course Code:	E26	PM Content:	Skills - Speaking / Listening

English 20 + Skills 9

Lessons per week:	29	AM Schedule:	09:15 - 12:30
Hours per week:	21.75 (15 + 6.75)	AM Content:	General English
Course Book:	Included (1)	PM Schedule:	13:30 - 16:00 (Tues to Thu)
Course Code:	E29	PM Content:	Skills - Speaking / Listening

English 20 + Skills 12

Lessons per week:	32	AM Schedule:	09:15 - 12:30
Hours per week:	24 (15 + 9)	AM Content:	General English
Course Book:	Included (1)	PM Schedule:	13:30 - 16:00 (4 days / week)
Course Code:	E32	PM Content:	Skills - Speaking / Listening



Schedule	Lessons	Hours	09:15 - 10:00	10:00 - 10:45	11:00 - 11:45	11:45 - 12:30	12:30 - 13:30	13:30 - 14:15	14:15 - 15:00	15:15 - 16:00
E20	20	15	General English	General English	General English	General English	—	—	—	—
E26	26	19.5	General English	General English	General English	General English	—	Skills*	Skills*	Skills*
E29	29	21.75	General English	General English	General English	General English	—	Skills**	Skills**	Skills**
E32	32	24	General English	General English	General English	General English	—	Skills***	Skills***	Skills***

Courses run Monday to Friday (Afternoons Monday to Thursday) / 1 lesson = 45 minutes
* 2 days/wk ** 3 days/wk *** 4 days/wk



IELTS Academic
Test Preparation

IELTS is a popular and well recognised examination taken by students who plan to enrol onto higher education programmes. Many professional organisations worldwide and an increasing number of universities accept IELTS as proof of language ability. Morning tuition can be supplemented with further IELTS tuition or other options.

Start Dates	Minimum Course Level	Maximum Class Size	Minimum Course Length	Minimum Age
Every Monday	Intermediate (B1)	16 (10 average)	2 weeks	16 (23 average)

IELTS Preparation 20

Lessons per week:	20	AM Schedule:	09:15 - 12:30
Hours per week:	15	AM Content:	IELTS Preparation
Course Book:	Included	PM Schedule:	N/A
Course Code:	I20	PM Content:	N/A

IELTS Preparation 20 + Skills 6

Lessons per week:	26	AM Schedule:	09:15 - 12:30
Hours per week:	19.5 (15 + 4.5)	AM Content:	IELTS Preparation
Course Book:	Included	PM Schedule:	13:30 - 16:00 (Mon & Wed or Tue & Thu)
Course Code:	IE26	PM Content:	Skills - Speaking / Listening

IELTS Preparation 20 + Skills 9

Lessons per week:	29	AM Schedule:	09:15 - 12:30
Hours per week:	21.75 (15 + 6.75)	AM Content:	IELTS Preparation
Course Book:	Included	PM Schedule:	13:30 - 16:00 (Tues - Thu)
Course Code:	IE29	PM Content:	Skills - Speaking / Listening

IELTS Preparation 20 + Skills 12

Lessons per week:	32	AM Schedule:	09:15 - 12:30
Hours per week:	24 (15 + 9)	AM Content:	IELTS Preparation
Course Book:	Included	PM Schedule:	13:30 - 16:00 (4 days / week)
Course Code:	IE32	PM Content:	Skills - Speaking / Listening



Schedule	Lessons	Hours	09:15 - 10:00	10:00 - 10:45	11:00 - 11:45	11:45 - 12:30	12:30 - 13:30	13:30 - 14:15	14:15 - 15:00	15:15 - 16:00
I20	20	15	IELTS Preparation	IELTS Preparation	IELTS Preparation	IELTS Preparation				
IE26	26	19.5	IELTS Preparation	IELTS Preparation	IELTS Preparation	IELTS Preparation		Skills*	Skills*	Skills*
IE29	29	21.75	IELTS Preparation	IELTS Preparation	IELTS Preparation	IELTS Preparation		Skills**	Skills**	Skills**
IE32	32	24	IELTS Preparation	IELTS Preparation	IELTS Preparation	IELTS Preparation		Skills***	Skills***	Skills***

Courses run Monday to Friday (Afternoons Monday to Thursday) / 1 lesson = 45 minutes
* 2 days/wk ** 3 days/wk *** 4 days/wk



Cambridge

B2 First

The B2 First qualification proves you have the language skills to live and work independently in an English-speaking country or study on courses taught in English. This qualification enables you to communicate effectively face-to-face, expressing

opinions and presenting arguments. Core exam tuition can be supplemented with a variety of afternoon classes to focus on your learning aims.

Start Dates	Minimum Course Level	Maximum Class Size	Minimum Course Length	Minimum Age
Every Monday	Intermediate (B1+)	10 (5 average)	2 weeks	16 (23 average)

B2 First 20

Lessons per week:	20	AM Schedule:	09:15 - 12:30
Hours per week:	15	AM Content:	B2 First
Course Book:	Included	PM Schedule:	N/A
Course Code:	F20	PM Content:	N/A

B2 First 20 + Skills 6

Lessons per week:	26	AM Schedule:	09:15 - 12:30
Hours per week:	19.5 (15 + 4.5)	AM Content:	B2 First
Course Book:	Included	PM Schedule:	13:30 - 16:00 (Mon & Wed or Tue & Thu)
Course Code:	FE26	PM Content:	Skills - Speaking / Listening

B2 First 20 + Skills 9

Lessons per week:	29	AM Schedule:	09:15 - 12:30
Hours per week:	21.75 (15 + 6.75)	AM Content:	B2 First
Course Book:	Included	PM Schedule:	13:30 - 16:00 (Tues to Thu)
Course Code:	FE29	PM Content:	Skills - Speaking / Listening

B2 First 20 + Skills 12

Lessons per week:	32	AM Schedule:	09:15 - 12:30
Hours per week:	24 (15 + 9)	AM Content:	B2 First
Course Book:	Included	PM Schedule:	13:30 - 16:00 (4 days / week)
Course Code:	FE32	PM Content:	Skills - Speaking / Listening



Schedule	Lessons	Hours	09:15 - 10:00	10:00 - 10:45	11:00 - 11:45	11:45 - 12:30	12:30 - 13:30	13:30 - 14:15	14:15 - 15:00	15:15 - 16:00
F20	20	15	B2 First	B2 First	B2 First	B2 First	—	—	—	—
FE26	26	19.5	B2 First	B2 First	B2 First	B2 First	—	Skills*	Skills*	Skills*
FE29	29	21.75	B2 First	B2 First	B2 First	B2 First	—	Skills**	Skills**	Skills**
FE32	32	24	B2 First	B2 First	B2 First	B2 First	—	Skills***	Skills***	Skills***

Courses run Monday to Friday (Afternoons Monday to Thursday) / 1 lesson = 45 minutes
* 2 days/wk ** 3 days/wk *** 4 days/wk





Cambridge C1 Advanced

Our University of Cambridge C1 Advanced examination course prepares you with the necessary skills to pass the internationally recognised qualification. The course looks at past examination papers and focus on exam techniques and covers writing, reading, listening and speaking together with grammar. Core exam tuition can be supplemented with a variety of afternoon classes.

Start Dates	Minimum Course Level	Maximum Class Size	Minimum Course Length	Minimum Age
Every Monday	Upper Intermediate (B2+)	10 (5 average)	2 weeks	16 (23 average)

C1 Advanced 20	Lessons per week:	20	AM Schedule:	09:15 - 12:30
	Hours per week:	15	AM Content:	C1 Advanced
	Course Book:	Included	PM Schedule:	N/A
	Course Code:	C20	PM Content:	N/A

C1 Advanced 20 + Skills 6	Lessons per week:	26	AM Schedule:	09:15 - 12:30
	Hours per week:	19.5 (15 + 4.5)	AM Content:	C1 Advanced
	Course Book:	Included	PM Schedule:	13:30 - 16:00 (Mon & Wed or Tue & Thu)
	Course Code:	CE26	PM Content:	Skills - Speaking / Listening

C1 Advanced 20 + Skills 9	Lessons per week:	29	AM Schedule:	09:15 - 12:30
	Hours per week:	21.75 (15 + 6.75)	AM Content:	C1 Advanced
	Course Book:	Included	PM Schedule:	13:30 - 16:00 (Tues to Thu)
	Course Code:	CE29	PM Content:	Skills - Speaking / Listening

C1 Advanced 20 + Skills 12	Lessons per week:	32	AM Schedule:	09:15 - 12:30
	Hours per week:	24 (15 + 9)	AM Content:	C1 Advanced
	Course Book:	Included	PM Schedule:	13:30 - 16:00 (4 days / week)
	Course Code:	CE32	PM Content:	Skills - Speaking / Listening



Schedule	Lessons	Hours	09:15 - 10:00	10:00 - 10:45	11:00 - 11:45	11:45 - 12:30	12:30 - 13:30	13:30 - 14:15	14:15 - 15:00	15:15 - 16:00
C20	20	15	C1 Advanced	C1 Advanced	C1 Advanced	C1 Advanced	-	-	-	-
CE26	26	19.5	C1 Advanced	C1 Advanced	C1 Advanced	C1 Advanced	-	Skills*	Skills*	Skills*
CE29	29	21.75	C1 Advanced	C1 Advanced	C1 Advanced	C1 Advanced	-	Skills**	Skills**	Skills**
CE32	32	24	C1 Advanced	C1 Advanced	C1 Advanced	C1 Advanced	-	Skills***	Skills***	Skills***

Courses run Monday to Friday (Afternoons Monday to Thursday) / 1 lesson = 45 minutes
* 2 days/wk ** 3 days/wk *** 4 days/wk



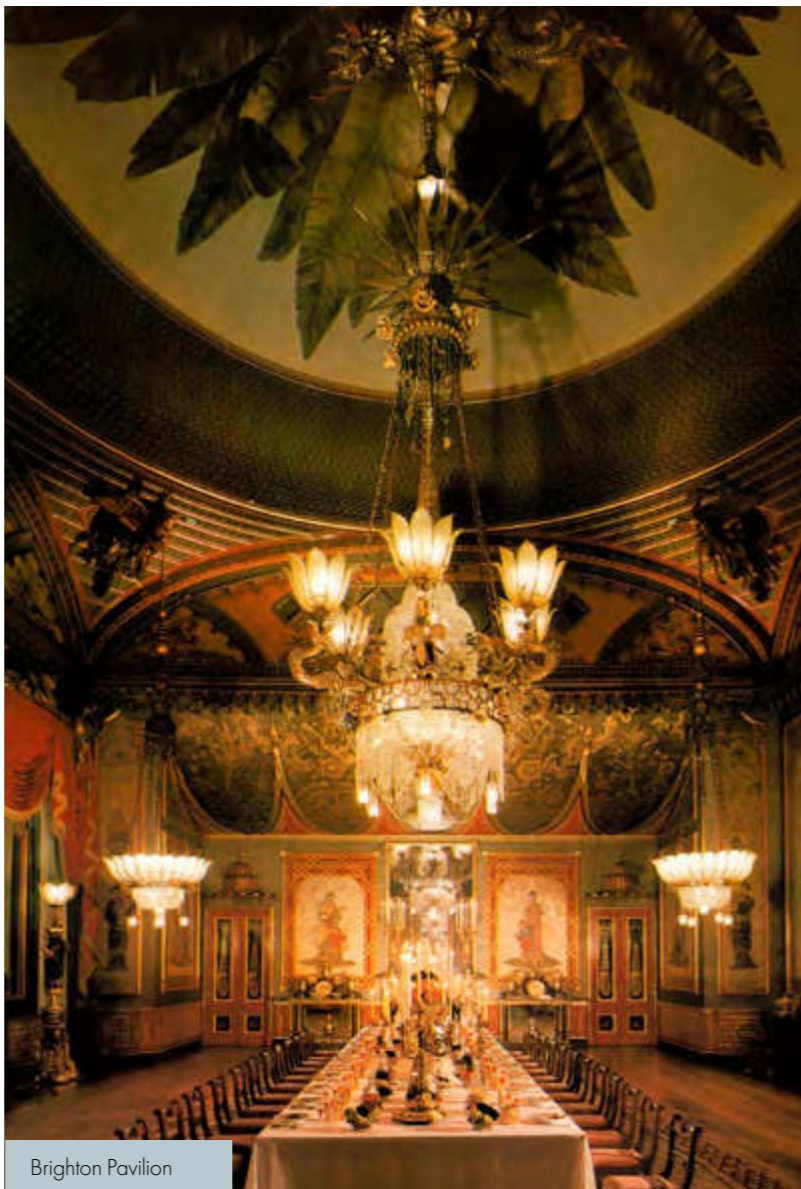
Seven Sisters



Brighton i360



Cream Tea



Brighton Pavilion

English & Culture (40+)

This course combines 20 cultural lessons with like-minded students that want to develop their English and explore British culture. Lessons & activities are with other 40+ course students wanting to explore South East England.

Activities vary depending on the season you choose. These are comprised of 4 after class cultural activities and excursions each week including a welcome meal and a Saturday excursion on the middle weekend.

Start Dates	Course Levels	Class Size	Course Length	Minimum Age
See below	Pre-Intermediate (B1) - Advanced (C1)	8 (5 average)	1 - 2 weeks	40

English & Culture (40+)

Lessons per week:	20	Course Dates 2024:	08.04 - 19.04 / 03.06 - 14.06
Hours per week:	15		12.08 - 23.08 / 23.09 - 04.10
Course Materials:	Included	AM Schedule:	09:15 - 12:30
Course Code:	HP	AM Content:	English & Culture
		PM Schedule:	13:15 - 16:30
		PM Content:	Cultural activities & excursions

Example Activities & Excursions

- » Arundel Castle & gardens
- » Rottingdean village cream teas
- » Lewes Castle & gardens
- » Thames cruise & London sightseeing
- » Preston Manor House
- » Theatre Royal Brighton
- » Seven Sisters country park
- » Royal Pavilion & Brighton Dome



Thames River Cruise

Schedule	Monday	Tuesday	Wednesday	Thursday	Friday	Saturday	Sunday
09:15 – 12:30	English & Culture	English & Culture	English & Culture	English & Culture	English & Culture	London Tour and River Cruise (1st weekend)	Arrival / Departure Free Day
12:30 – 13:15	Lunch	Lunch	Lunch	Lunch	Lunch		
Week 1	Welcome Meal	Arundel Castle	Cream Tea	Seven Sisters	-		
Week 2	Preston Manor	Lewes Castle	Royal Pavilion	Brighton i360	-		

Activities are an example only, schedules are confirmed each week and published on site
Courses run Monday to Friday / 1 lesson = 45 minutes (breaks 10:45 – 11:00 / 12:30 – 13:15)



ble
international

7 Old Steine, Brighton
BN1 1EJ, United Kingdom

T + 44 (0)1273 647370
F + 44 (0)1273 693606

info@brightonlc.co.uk
www.brightonlc.co.uk

